

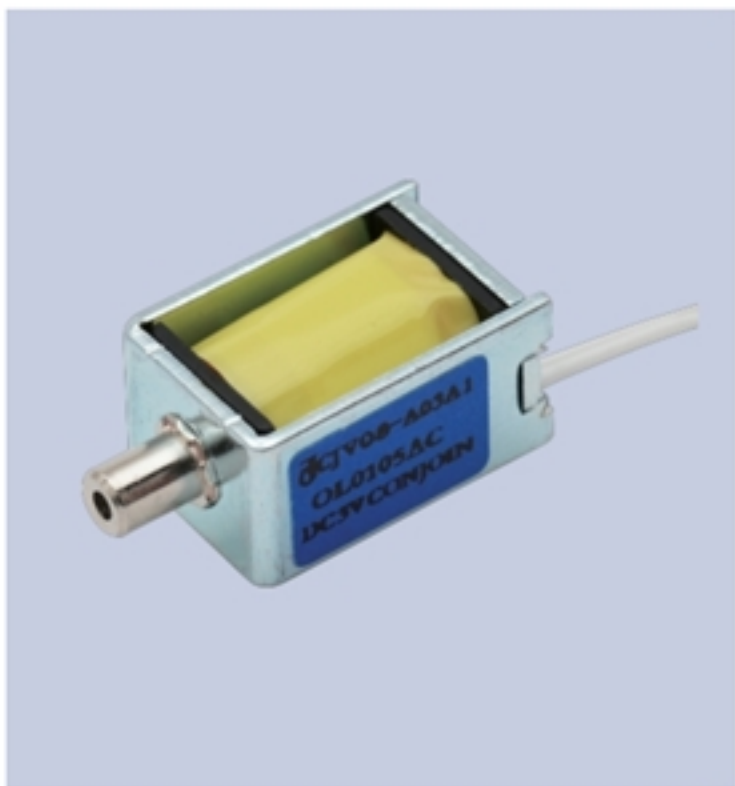


CJV08系列 series

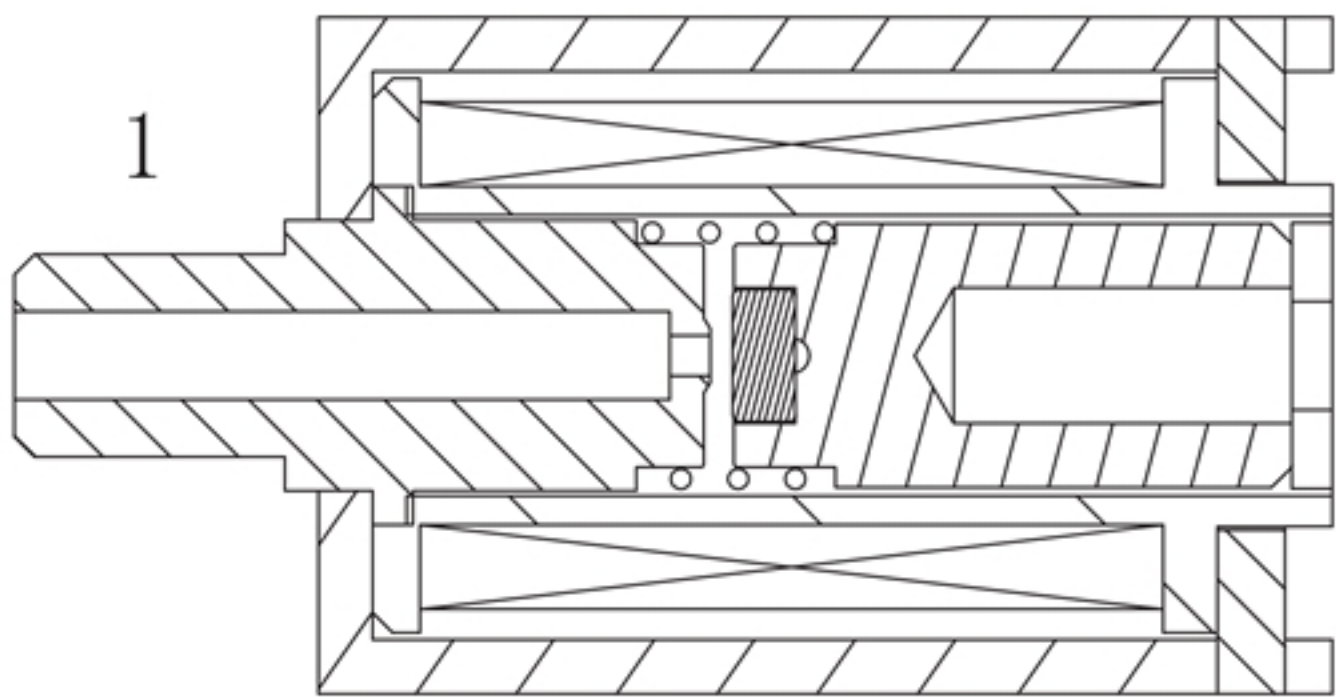
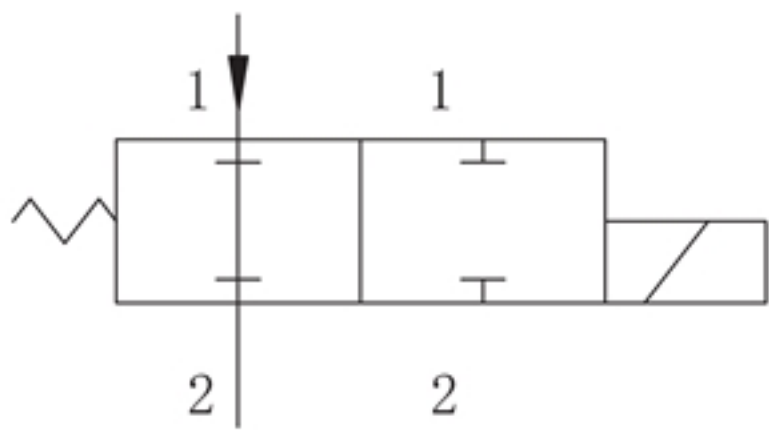


应用领域：高端醫療器械、
保健器材、
家用電器、
廚房衛浴、
美容美體等

Application: High-end medical equipment,
Health care equipment,
Household appliance,
Kitchen and bathroom,
Cosmetology and bodycare etc.



| 產品參數表 Parameters | | | | | | | | |
|---|-----------------------|-----------------------|-------------------------|-------------------------|--|---------------------------------|---------------------------------|----------------|
| 型號 Model | 額定電壓 Rated voltage | 額定電流 Rated current | 直流阻抗 DC resistance | 功率 Power consumption | 排氣速度 Exhaust speed 300mmHg→ 15mmHg 65CC | 氣密性 Leakage 300mmHg 100CC | 最低工作電壓 Min operating voltage | 工作模式 Type |
| CJV08-A03A1 | DC 3 V | 75mA±10% | 40Ω±10% | 0.225 W | ≤ 2 S | < 3 mmHg/min | < 2.1 V | 常開 Normal open |
| CJAV08-2A04A1 | DC 4 V | 100mA±10% | 40Ω±10% | 0.4 W | ≤ 2 S | < 3 mmHg/min | < 3.2 V | 常開 Normal open |
| 其它參數 Others | | | | | | | | |
| 壽命實驗 Life test | | | 30,000次 (100CC容器， 5S/次) | | | | | |
| 使用環境 Working environment | | | 0~50°C， 75%RH | | | | | |
| 可根據客戶具體要求進行定制。 Customization based on specific customer requirements available. | | | | | | | | |



產品構造圖
Dimension Drawing

